

CONCEPT

VOL. 127

International Magazine of Competition CA 현대건축사 November 2009

AUM&LEE ARCHITECTS ASSOCIATES

Special Issue Residence

UNStudio Dalian Football Stadium

Morphosis 41 Cooper Union Academic Square

Renzo Piano Il Vulcano Buono



National Music Centre _ Alberta, Canada

SPFa



검은색 불륨의 본 프로젝트는 양쪽 기둥으로 받쳐진 교량을 콘셉트로 물리성과 상징성을 갖추고자 한다.

단순함과 순수함, 기하학적인 요소를 갖춘 프로젝트는 남북으로 배치되었으며, 주변부지와 1층의 열린 공간이 조화를 이룬다. 건물은 유리가 끼워진 건물 내부 중심으로 자연광이 들어와 건물의 투명성을 높인다. 프로젝트는 개념적으로 면대면의 결합과 목재 접합부와 유사 건물의 다층 접속을 통해 지역사회 발전을 촉진하고 활력을 불어넣는다.

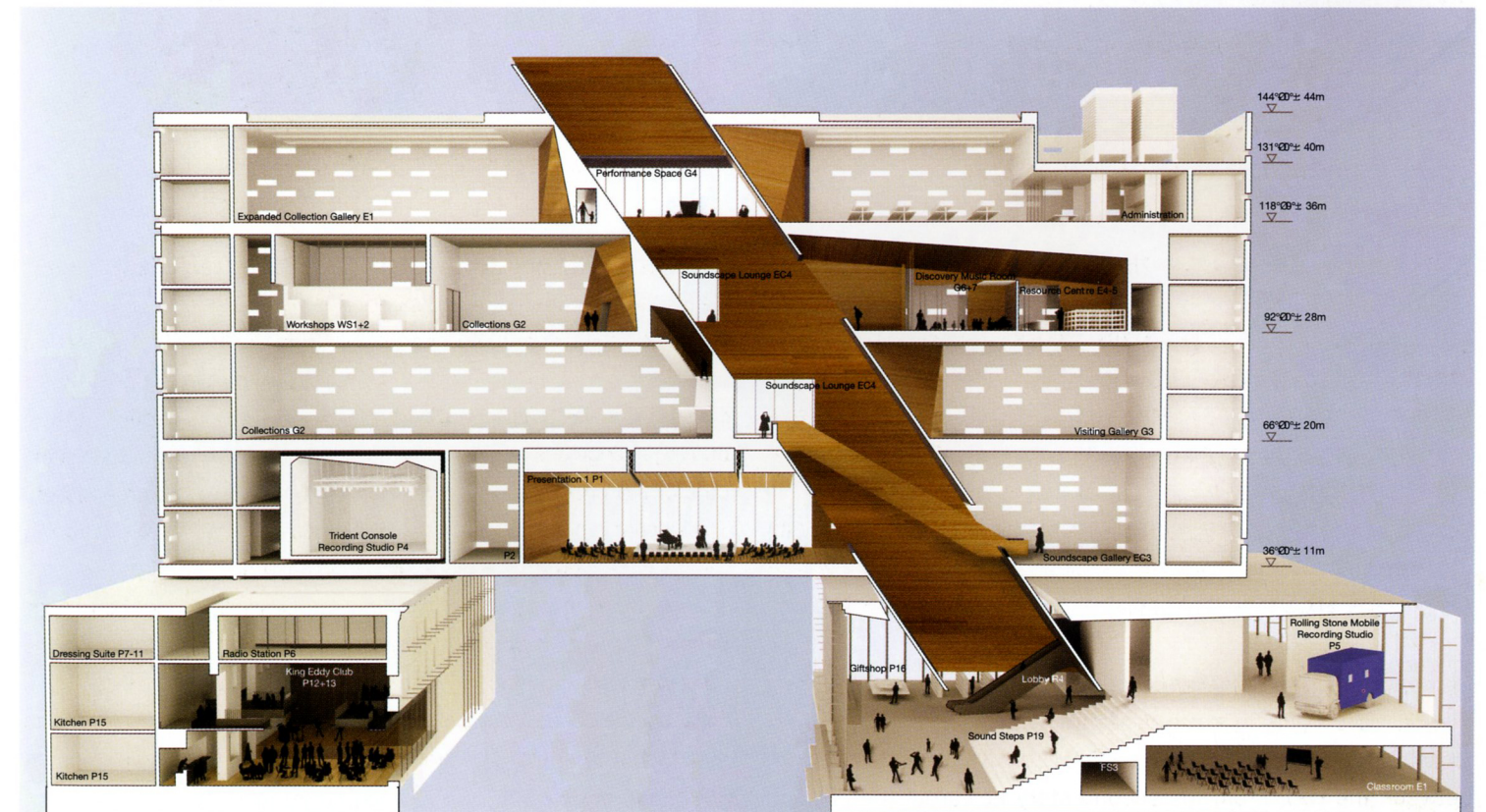
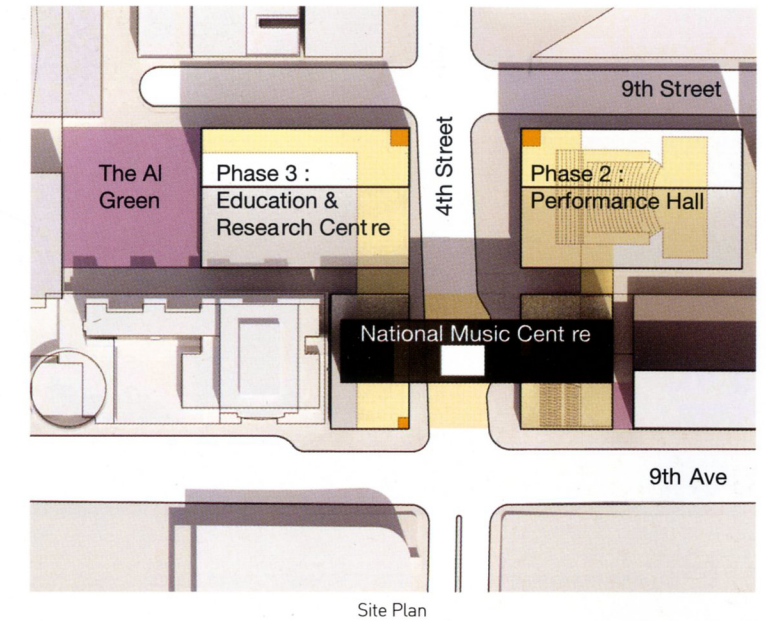
외부는 열을 흡수하는 조립 콘크리트 패널로 마무리했다. 파사드는 태양 에너지를 이용해 패널 뒤의 도관과 공기를 가열한다. 프로젝트는 일체식 구조가 특징이며 분산된 직사각형 개구들은 조립식 패널과 유리 패널을 갖추고 있다.

Concept, anchoring the project both physically and symbolically, the King Eddy is raised slightly to match its elevation and site-lines with the lobby on an adjacent site - both are wrapped in glass to create transparency between the two. From the second story upwards, the building represents a giant bridge - also physically and symbolically. The bridge is

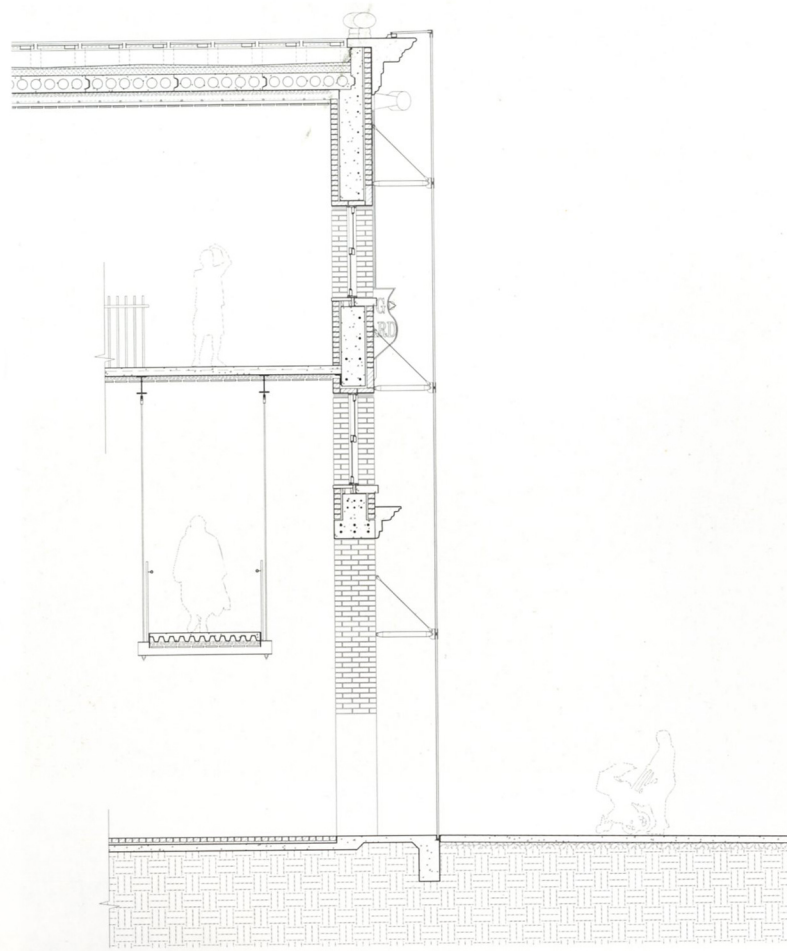
simple and straightforward, slender, structurally pure and geometrically elementary. It faces north and south to receive optimal natural light into the building. Conceptually similar to a wood joint, where maximum surface-to-surface connection provides the greatest opportunity for cohesion, fusion and strength, the multi-layered connectivity of the building strengthens and enriches the community experience. Such is the core of the bridge, a symbol and strength of the Cantos organization. The exterior is black, precast concrete panels with a flat finish - to absorb maximum heat during Calgary's many cold months. The facade uses the sun's energy to heat the pipes and air behind the panels. Scattered rectangular openings are glass panels flush with the precast panels to emphasize the monolithic nature of the bridge. At a distance, the concept appears a monolith - a striking black volume with syncopated skin and a central shaft of light, suspending volumes on alternating sides.

Written by SPSFa

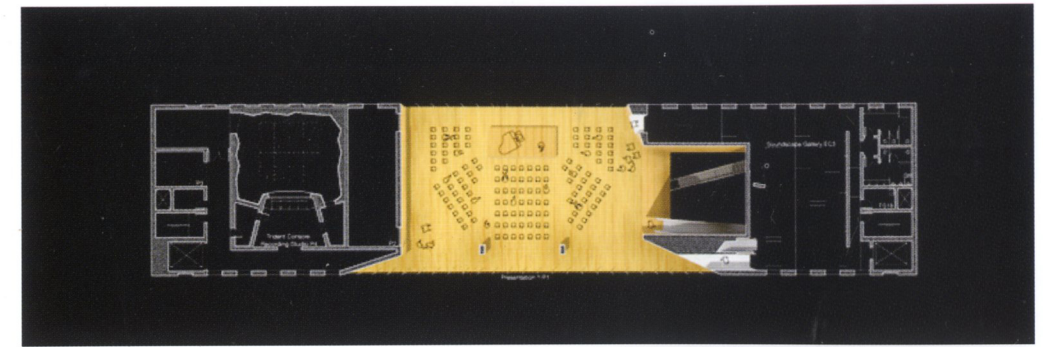
Architects SPSFa
 Client Cantos Music Foundation
 District Calgary's East Village
 Use Education & Research Centre, Museum, Recording Studio, Restaurant/Bar And Live Music Venue
 Client Cantos Music Foundation
 Site Area 2,419m²
 Bldg. Area 9,342m²
 Gross Floor Area 9,342m²
 Bldg. Coverage Ratio 81%
 Gross Floor Ratio 3.86%
 Bldg. Scale 7 Stories above Ground
 Max. Height 44m
 Parking Lot 59cars



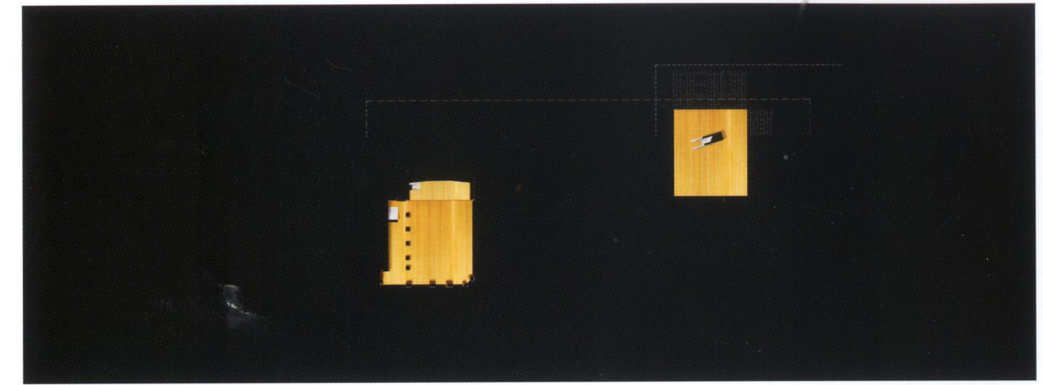
Longitudinal Section



Eddy Wall Detail Section



Level 1



Ground Level

