



## AIALA Announces 2015 Design Award Winners!

**Los Angeles, CA – October 30, 2015** – The American Institute of Architects Los Angeles (AIALA) announced the winners of its prestigious 2015 Design Awards program Thursday night, October 29, 2015, at an event celebrating recipients.

Selected by a jury of noted architects from across the United States, the AIALA Design Awards recognize design excellence in some of the most exemplary built work in the country at this time.

“The competition is tremendous which is exactly what we are looking for to raise the bar for the profession,” noted the 2015 AIALA Design Awards jury. “Los Angeles is raising the bar for the rest of the country.”

Winners of the competition’s counterpart, the AIALA Next LA awards, bestowed on as yet unbuilt commissions, were also announced. A jury of experts residing in Los Angeles, a city that is seeing its dream of true urban living realized, noted the many interesting strategies used to create more connection and engagement on an urban level in a number of winning submissions.

**2015 AIALA Presidential Honorees** as previously announced by the AIALA were also bestowed. Names of Presidential Honorees follow Design Award and Next LA award recipients in this story.

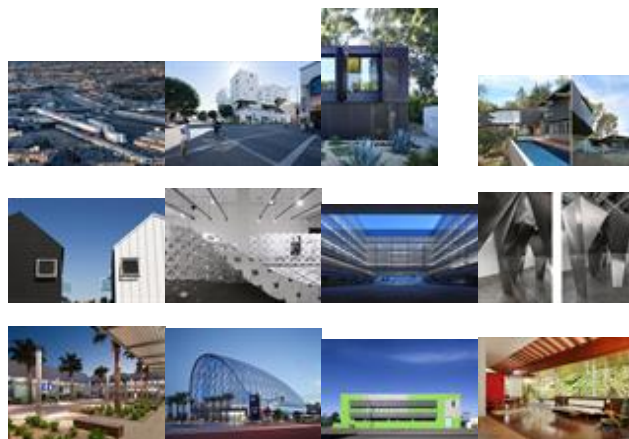
By setting the 2015 AIALA Design Awards Ceremony + Party in two downtown locations, the evening both honored and embodied a burgeoning focus on placemaking at the heart of Los Angeles. Well over six hundred attendees gathered at the Aratani Theatre in the Japanese American Cultural & Community Center in Little Tokyo for a pre-event reception and ceremony. Winners, Presidential Honorees, and Design Award attendees then moved to the A+D Museum, in the Arts District, for an après-party which included buffet dinner.

Design Award and Next LA awards are given in three classifications: Honor, Merit and Citation, with Honor being the highest category.

Completed projects, located anywhere, that are designed by AIA members from firms based in the LA area, and architecture constructed in Los Angeles by any AIA member, no matter their base of operations, are eligible for submission for Design Awards.

For high quality images of winners and for more information about the event, please call, 213-639-0763 or email [tibby@aialosangeles.org](mailto:tibby@aialosangeles.org)

### 2015 AIALA DESIGN AWARDS WINNERS



[Next](#)

*Click on image to view 2015 Design Awards (Built Projects) winners slideshow.*

### HONOR AWARDS

One Santa Fe  
Los Angeles, CA  
Michael Maltzan Architecture, Inc.

Star Apartments  
Los Angeles, CA  
Michael Maltzan Architecture, Inc.

Morgan Phoa Residence/Library  
Los Angeles, CA  
Studio Pali Fekete architects [SPF:a]

### MERIT AWARDS

Mulholland Annex  
Los Angeles, CA  
A L M Project Inc.

Blackbirds  
Los Angeles, CA  
Bestor Architecture

Cellular Complexity Evolve  
Los Angeles, CA  
kais Al-Rawi, Julia Koerner & Marie Boltenstern

Hyundai Motor America Headquarters  
Fountain Valley, CA  
Gensler

En Pointe  
Los Angeles, CA  
Heather Roberge | murmur

#### **CITATION AWARDS**

Long Beach Airport - Passenger Concourse  
Long Beach, CA  
HOK

Anaheim Regional Transportation Intermodal Center  
Anaheim, CA  
HOK

The Guidance Center  
Long Beach, CA  
Lynch Eisinger Design Architects

Olan G. and Aida T. Hafley House  
Long Beach, CA  
Kelly Sutherlin McLeod Architecture, Inc.

Pressed Juicery Prototype Store  
Beverly Hills, CA  
Standard

Modern Barn House  
Santa Monica, CA  
Rios Clementi Hale Studios

WeHo Duplex  
West Hollywood, CA  
Rios Clementi Hale Studios

Shulman Home and Studio  
Los Angeles, CA  
Lorcan O'Herlihy Architects [LOHA]

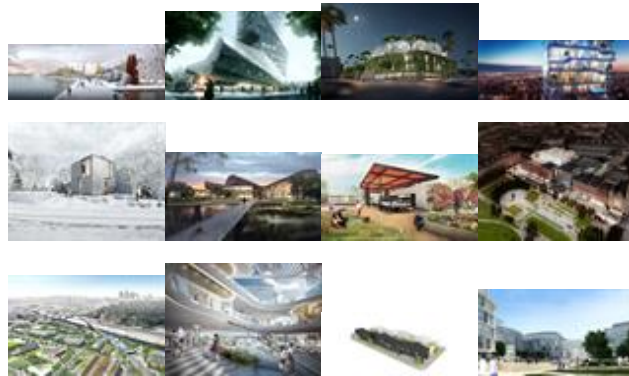
Pterodactyl, Culver City, CA  
Eric Owen Moss Architects

Hyundai Capital Europe  
Frankfurt, Germany  
Gensler

Surfhouse  
Hermosa Beach, CA  
XTEN Architecture

Hollyhock House Restoration Project  
Hollywood, CA  
The City of Los Angeles, Bureau of Engineering, Architectural Division

#### **2015 AIA LA NEXT LA RECIPIENTS**



[Next](#)

*Click on image to view 2015 Next LA (Unbuilt Projects) winners slideshow.*

#### **HONOR AWARDS**

Guggenheim Helsinki  
Helsinki, Finland  
XTEN Architecture

#### **MERIT AWARDS**

Hanking Center Tower  
Shenzhen, China  
Morphosis Architects

8600 Wilshire  
Beverly Hills, CA  
MAD and Gruen Associates

T3 Tower  
Beirut, Lebanon  
PARALX

Vasilitsa House  
Vasilitsa, Greece  
Yianna Bouyioukou Architects

Berkeley Global Campus  
Richmond, CA

Kevin Daly Architects with Greg Lynn Form

Stoneview Nature Center  
Culver City, CA  
Ehrlich Architects

Dublin City Library and Parnell Square Cultural Center  
Dublin, Ireland  
Moore Ruble Yudell Architects & Planners

Los Angeles River Urban Agriculture Plan  
Los Angeles, CA  
Perkins + Will

Union Station Master Plan  
Los Angeles, CA  
GRUEN Associates

Grey Gardens  
Los Angeles, CA  
Bestor Architecture and Dutton Architects

#### **CITATION AWARDS**

Providence Saint John's Phase 2 Master Plan  
Santa Monica, CA  
Perkins Eastman, Architecture & Planning and Moore Ruble Yudell Architects & Planners

Telstra 288 Exhibition Street  
Melbourne, Australia  
NBBJ

The Main Museum of Los Angeles Art  
Los Angeles, CA  
Tom Wiscombe Architecture

Museum of Compassion (MOC)  
Louisville, Kentucky  
Aaron Neubert Architects

Technology Campus Masterplan (Parcel 10)  
Playa Vista, CA  
LARGE Architecture

Civic Center Isola-Garibaldi  
Milan, Italy  
MLLO

Bandersnatch  
Portland, OR  
Steven Christensen Architecture

#### **2015 AIA/ALA PRESIDENTIAL HONOREES**

**Gold Medal:** Steven Ehrlich, FAIA

**25-Year-Award:** Games of the XXIIIrd Olympiad. Los Angeles, California  
The Jerde Partnership  
Sussman/Prejza

**Emerging Practice:** Omgivning  
(Karin Liljegren, AIA; Principal, Omgivning)

**Design Advocate:** Alissa Walker

**Community Contribution:** Dana Cuff  
(Director, cityLAB)

**Educator of the Year:** Sarah Lorenzen, AIA  
(Associate Professor and Chair, Cal Poly Pomona)

**Honorary AIA/ALA:** Aaron Paley, Hon. AIA/ALA  
(President, Community Arts Resources)

**Building Team of the Year:** The Team Responsible For The Hercules Campus at Playa Vista  
Levin & Associates Architects  
The Ratkovich Company  
Nabih Youssef & Associates  
ARC Engineering  
Galvin Preservation Associates  
EPT Design  
Spectra Company  
Ross Project Management

---

Last updated: 20-Nov-2015 01:01 PM

 Share



[▲ Back To Top](#)

[Terms of use](#)

[Privacy Policy](#)

[Site Map](#)

2012 all rights reserved