

ARCHITECT

- [PROJECTS](#)
- [TECH & PRODUCTS](#)
- [PRACTICE](#)
- [CULTURE & CRITICISM](#)
- [AWARDS](#)
- [CONTINUING ED](#)

Patagonia Favorites
Built to last and backed by our Ironclad Guarantee
[SHOP FAVORITES](#)

[LEARN MORE](#)

PROJECT

[Home](#) > [Projects](#) > Morgan Phoa Library and Residence

Posted on: December 05, 2016 0 Like 0 0 0 0

Morgan Phoa Library and Residence

[Studio Pali Fekete Architects](#)



SHARED BY

[Victoria Carodine](#), Hanley Wood

PROJECT NAME

Morgan Phoa Library and Residence

LOCATION

Los Feliz, CA

PROJECT STATUS

[Built](#)

SIZE

3,300 sq. feet

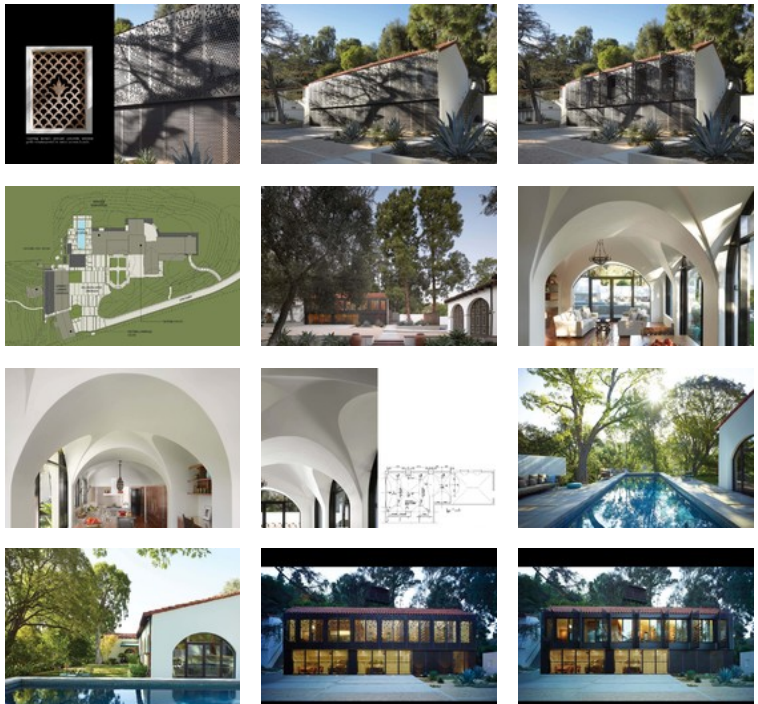
AWARDS



Residential Architect Design Awards 2016
Renovation/Adaptive Reuse: Honorable Mention

TYPE

[Single Family](#)



[View all \(20\) images](#)

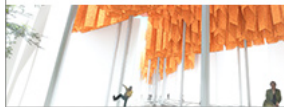
By [EDWARD KEEGAN, AIA](#)

2016 Residential Architect Design Awards

Renovation/Adaptive Reuse: Honorable Mention

EARN CEU CREDITS FOR I
MAINTENANCE WITH THE
OF SHADE CONTINUING
EDUCATION COURSE.

[TAKE THE COURSE >](#)



RELATED PROJECTS



Modern House with C Touch, Villa at Kondap Hyderabad

Hyderabad
[Kreative House](#)



Engineered Timber Floor, Beaumaris, Melbourne

[O'Brien Timber Floors](#)



The Morgan Phoa Library and Residence in Los Feliz, Calif., updates a historically designated property designed by Wallace Neff in the late 1920s. Studio Pali Fekete Architects renovated an ill-conceived 2004 family room addition to the original garage in a manner complementary to Neff's original interiors. The 3,300-square-foot project also includes the insertion of a new two-story garage and library volume. Its gabled form and tile roof recall the articulation of the original structures, and a perforated bronze anodized-aluminum screen offers both privacy and solar control as well as a boldly modern reinterpretation of the precast concrete window grilles of the original house.

Shulman Home and S
Los Angeles, CA
Lorcan O'Herlihy Architects



Half-Tree House
Barryville, NY
Jacobschang Architecture




Mask House
Ithaca, NY
WOJR

[View All Related](#)

Advertisement



 **Add a Project** Publish Your Projects Show off and upload images, text, and video of your work. We pick the very best for our project newsletters. [Upload >](#)

MORE PROJECTS BY STUDIO PALI FEKETE ARCHITECTS



[Double Stick >](#)



[Wallis Annenberg Center for the Performing Arts >](#)



[Nightingale Residence >](#)



[Additions To Historic West St. Mary's Manor >](#)



[House On Beverly Ranch Road >](#)



[House On The Connecticut River >](#)

SIGN UP HERE

Keep up with all the ARCHITECT. Sign up for ARCHITECT Newsletter

JOIN THE DISCUSSION

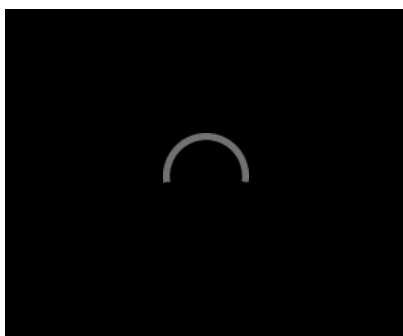
Please read our [Content Guidelines](#) before posting



Write a comment

0 Comments

[Subscribe](#) • [RSS](#)



Sponsored Links

[A Rainscreen Solution Using Fiber Cement Architectural Wall Panels](#)

[Design Professionals Forecast Luxury Kitchen Trends](#)

[Architectural Ultra High Performance Concrete](#)