

## Zhuhai Opera House / SPF architects

15:07 - 4 July, 2009 by [Karen Cilento](#)

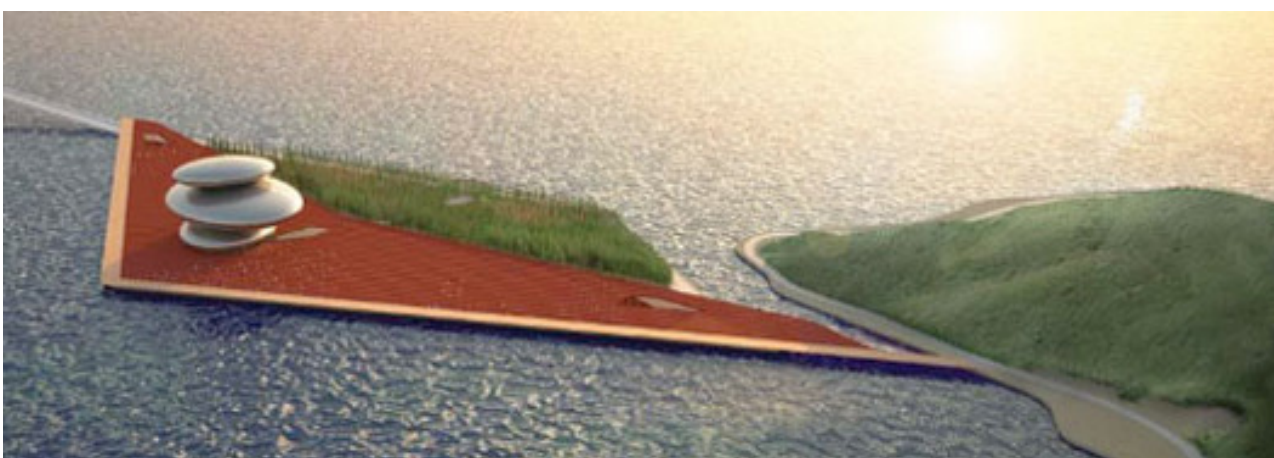
[Share in Whatsapp](#)

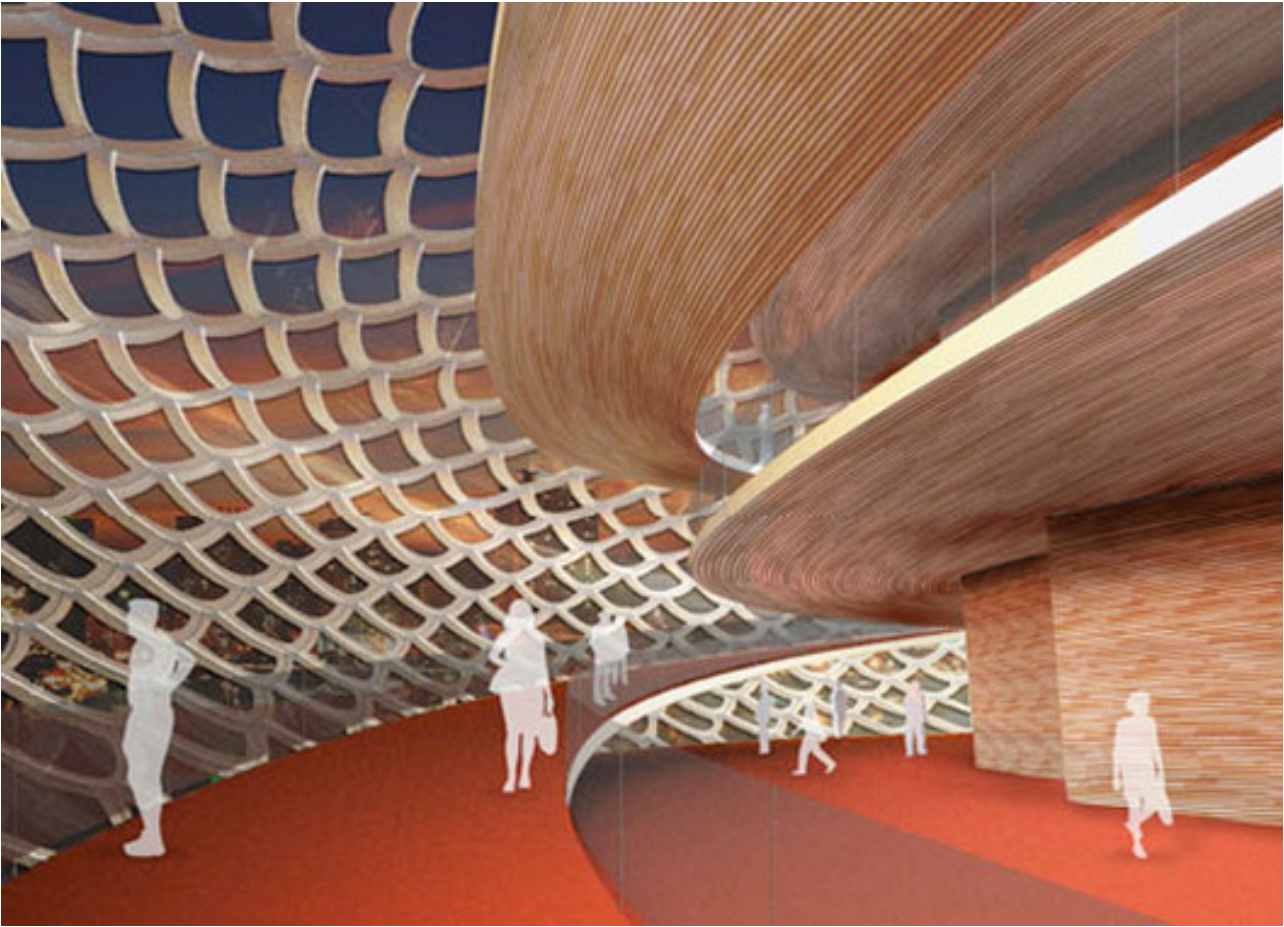
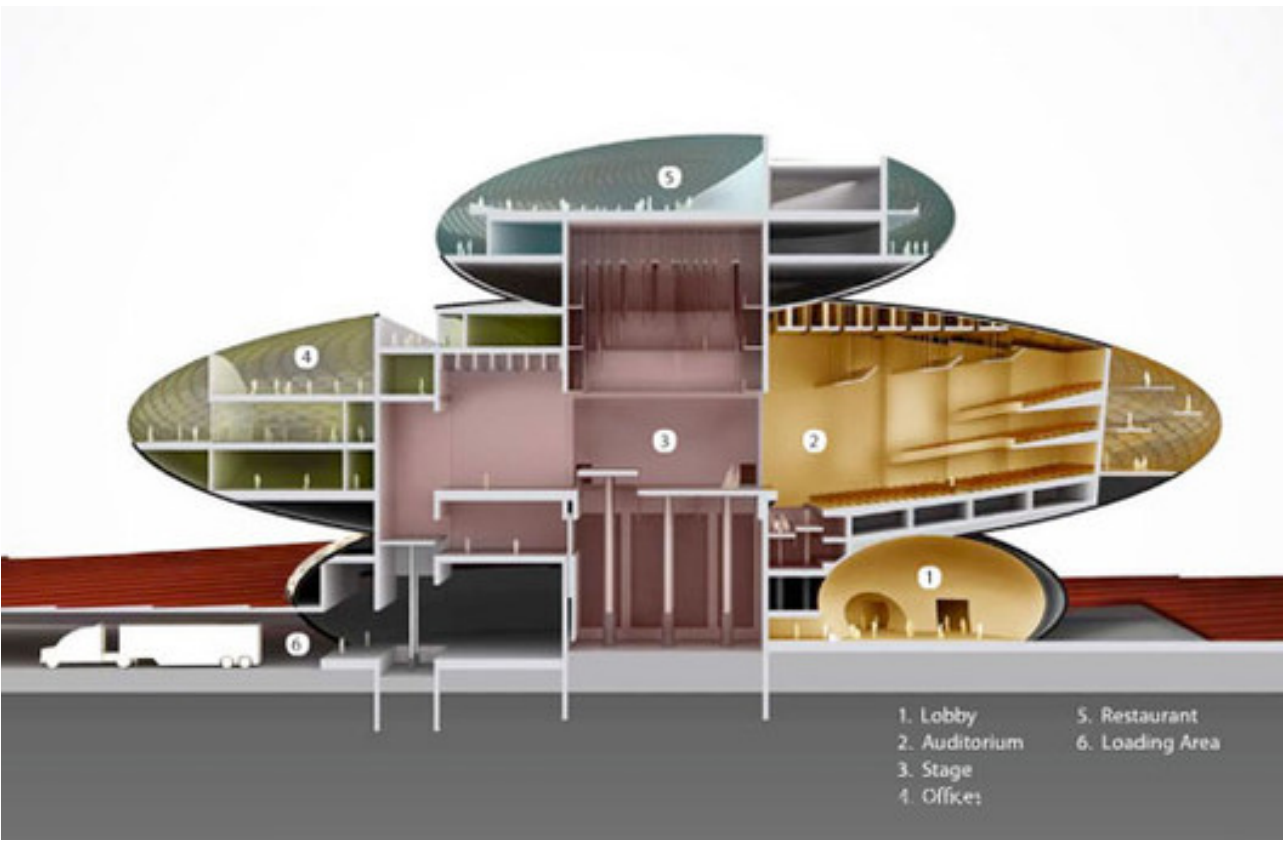


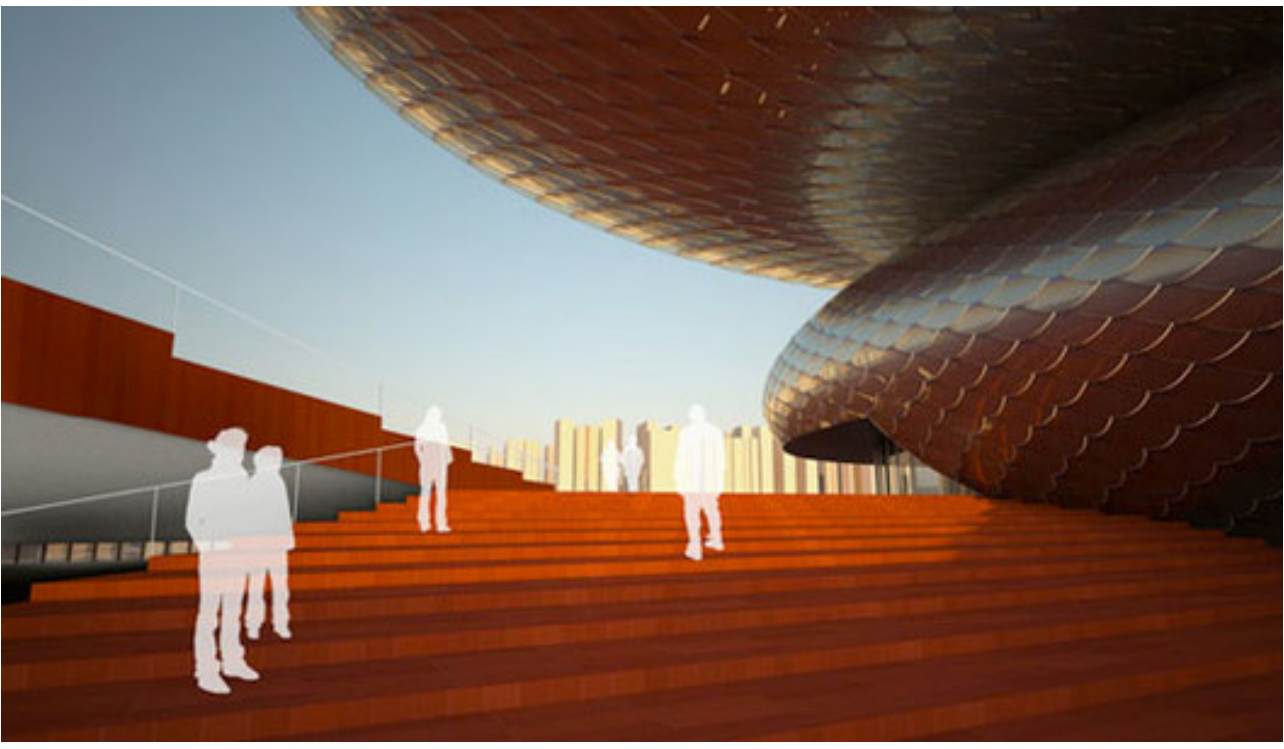
[SPF Architects](#), based in Culver City, California, have created an design for the [Zhuhai Opera House](#) in Guangdong Province, [China](#). Learning from the traditional principles of the region, the opera house's form gives the appearance of stacked pebbles. Such an idea was conceived as a way to create a visual balance based on the Chinese principle from the five element theory. The opera house has three stacked levels that provide varying programmatic activities, such as a 1500 seat auditorium, large plaza gathering space, rehearsal hall, restaurants and other public amenities. A forest behind the structure gives the impression of growth and sustainability.

More images after the break.

Images courtesy of SPF architects. As seen on [designboom](#).







Log in | Sign up